

SHARRATE

How to Install Fabric Wallcovering

Use a favourite fabric to add texture and pattern to your walls.

Materials Needed:

- 1) Fabric
- 2) Fevicol
- 3) Putty
- 4) Brush
- 5) Metal Scrapper
- 6) Scissors
- 7) Knife
- 8) Measuring tape

Measure the Walls

Use tape for measuring height and width of space for fabric. Note the measurements down for reference.



Choose Fabric

Choose your favourite colours or patterns in fabric. Good quality decorator fabrics work very nicely for this technique.



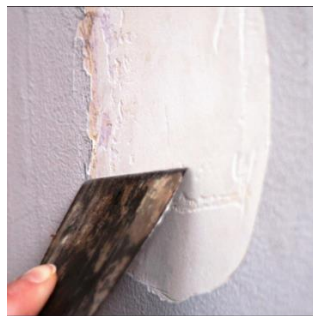
Prepare Walls

Make sure wall is clean and free from any nails or screws. Clean wall with metal scraper and repair with putty where required.



Paste the Wall

Apply Fevicol with metal scraper from top to bottom. Paste it properly so the fabric easily stick on the wall without air bubbles.



Attach Fabric

Cut the fabric with the measurements of your wall. Hold the fabric up to wall and stick on it from one side (left to right) to another. Smooth out the fabric working right and down until the entire panel is affixed to wall. Any bubbles or wrinkles can be smoothed out by hand.

Use knife to cut excess from corners and around Switch board holes.





Tightly scrape the fabric with a clean scraper so all air bubbles are removed, and all fabric is creased out, wherever you see fabric not spread properly or distorted , lift up the fabric from one hand to this position and then pull back properly and scrape it down.

The fabric should be smooth, without any creases / distortions or bubbles, you have prepared the surface absolutely smooth.

The way it looks is how it will look for long time, so the time spent now on putting it properly will create the ambience you would admire.

